

A project by



THE FEEL
GOOD LIFE
WELCOMES YOU.

2 & 3 Bedroom deluxe apartments
@ Kundalahalli, Bengaluru.

Purvi
MITHILA
 making inspiration

Purvi Mithila comes to you from Sai Purvi Developers. The group with a wide presence in projects that span the many aspects of Real Estate and Construction, like consulting, development of resorts, layouts and even villas. Our portfolio has a number of commercial complexes, apartments and even housing colonies. And soon, we look forward to foraying into the realm of infrastructure development. Come live the experience of homes from our stable, and feel good for life.

FEEL GOOD.
 YOUR HOME IS
 BUILT BY EXPERTS.

<http://www.saipurvidevelopers.in>

Builders & Developers



No 1668/A, G.V Complex, 14th Main,
 Near UCO Bank, HSR Layout, Bangalore -560102
 Phone: +91 70226 22680, 81, 82, 83, 84.
 E-mail: sales@saipurvidevelopers.in

Site Address:

Sy.No. 124&125, Mumekotala Village, Bangalore -560037.
 Email: sales@saipurvidevelopers.in

ARCHITECTS



email: info@fwdarchitects.com
 www.fwdarchitects.com
 Ph: 080 4953 3387

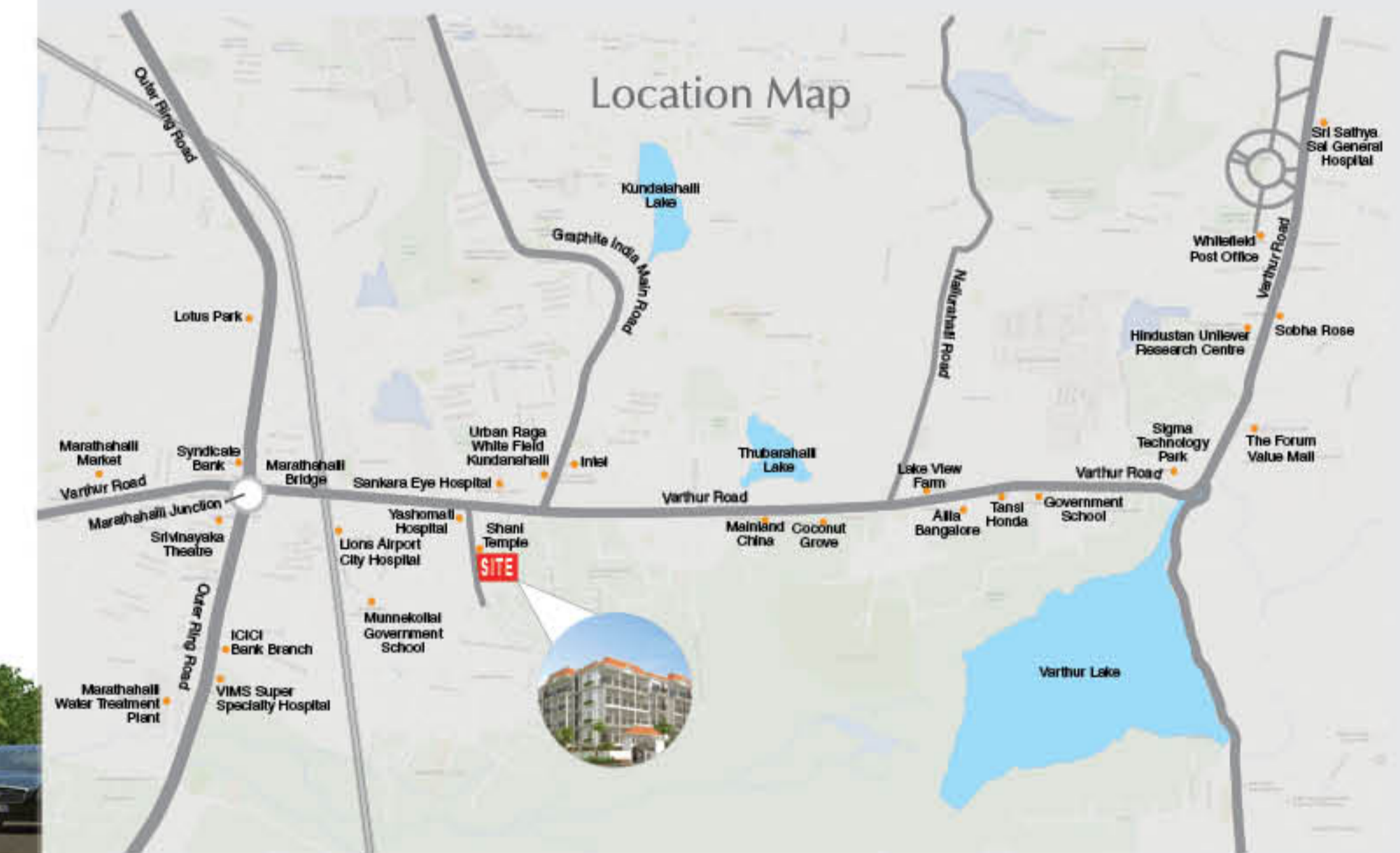
Legal Advisor

SNN Associates
 P.Nagamuni Reddy Indranagar Bangalore
 Mobile No- (+91)9945159840



One of the first things that impresses the human mind is the good looks of a place, isn't it? On that note, brace yourself for a home that looks good, and then even makes you feel good about living there.

Purvi Mithila is an expansive community of four premium blocks and 000 apartments designed in the most desired locales of Bengaluru. For someone who practices the art of living in good homes, here's one that's true to what will entice them. So may we say, as you walk in, get set to revel in the beauty of Purvi Mithila.



FEEL GOOD.
 YOU ARE CLOSER TO
 MANY CONVENIENCES.

FEEL GOOD.
YOU'LL LIVE IN A
GREAT-LOOKING HOME.

One of the first things that impresses the human mind is the good looks of a place, isn't it? On that note, brace yourself for a home that looks good, and then even makes you feel good about living there. Purvi Mithila is an expansive community of four premium blocks and 000 apartments designed in the most desired locales of Bengaluru. For someone who practices the art of living in good homes, here's one that's true to what will entice them. So may we say, as you walk in, get set to revel in the beauty of Purvi Mithila.



FEEL GOOD.
YOU'RE ENVELOPED BY
SPACE AND MORE SPACE.

While topographically Furvi Mithila belongs to Marathalli, it is located in the Varthur area, a location that's sparsely populated, yet is surrounded by a busy life. With tons of openness around, you will have lots and lots of space to do your things. Because it's a community you will want to make your home as, as several of its amenities are best enjoyed under the open blue skies and the greens of the environment around.



LEGEND

- | | | |
|-------------------------|-------------------------|------------------|
| A. Entry | F. Elder's Sitting Area | K. Tennis Court |
| B. Security | G. Theme Garden | L. Swimming Pool |
| C. Transformer Yard | H. Practice Pitch | M. Toddler Pool |
| D. Children's Play Area | I. Sump | N. Volley Ball |
| E. Sand Pit | J. Basket-ball Court | |

MASTER PLAN



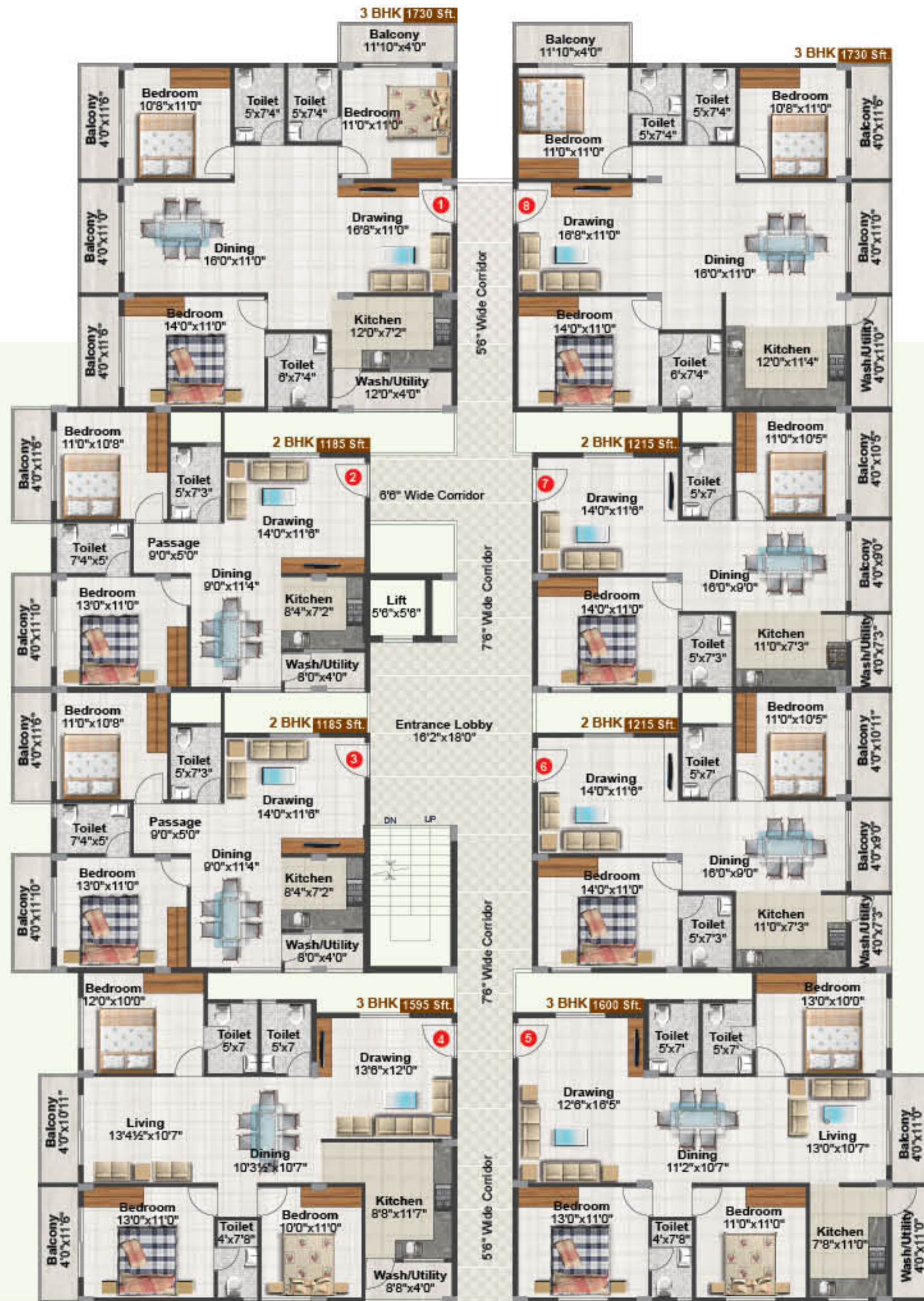
TYPICAL FLOOR PLAN

Area Statement

Flat No.	Unit	Area in Sft.
1	3 BHK	1730
2	2 BHK	1186
3	2 BHK	1186
4	3 BHK	1595
5	3 BHK	1600
6	2 BHK	1215
7	2 BHK	1215
8	3 BHK	1730



BLOCK - A



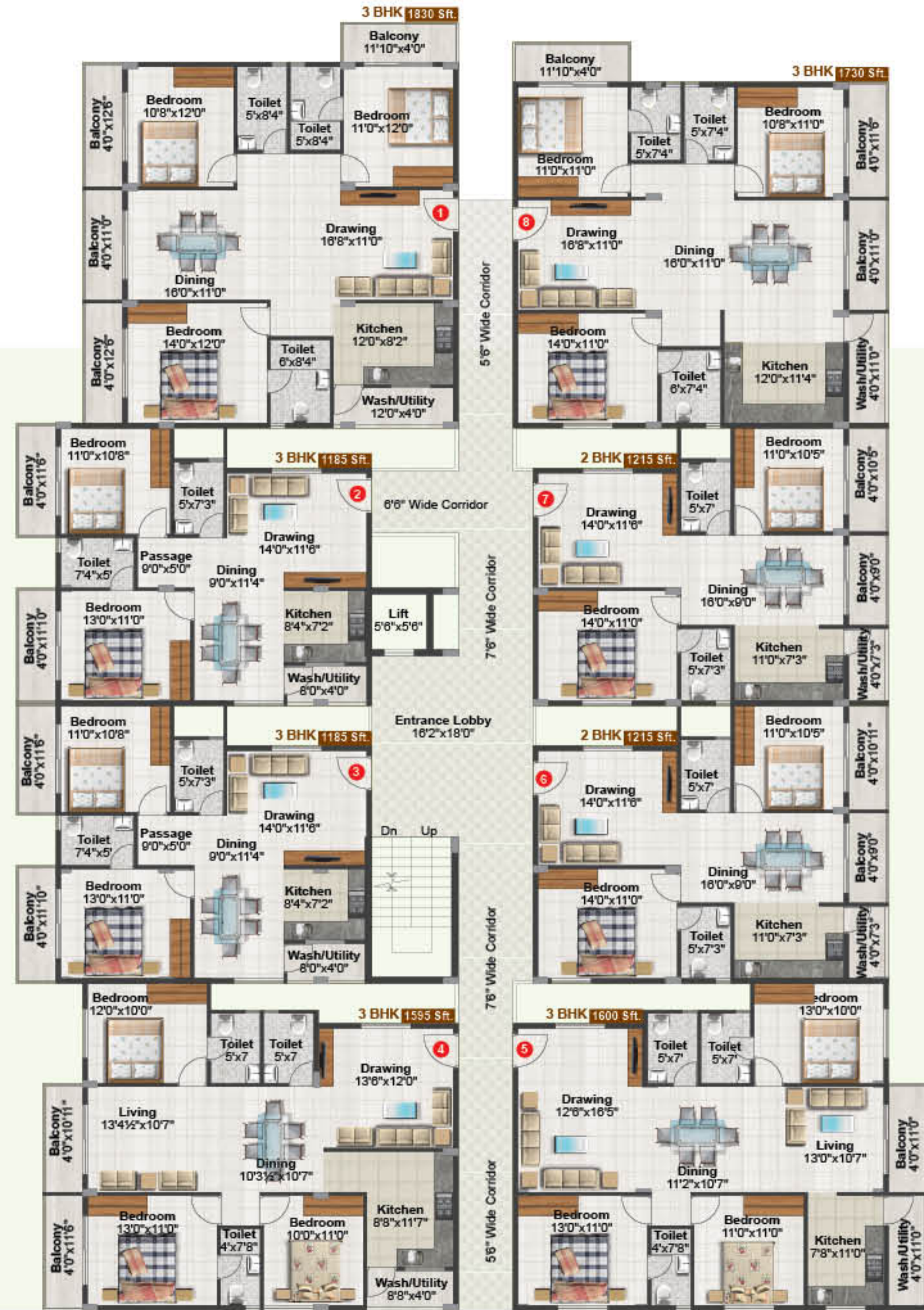
TYPICAL FLOOR PLAN

Area Statement

Flat No.	Unit	Area in Sft.
1	3 BHK	1830
2	2 BHK	1185
3	2 BHK	1185
4	3 BHK	1595
5	3 BHK	1600
6	2 BHK	1215
7	2 BHK	1215
8	2 BHK	1730



BLOCK - B



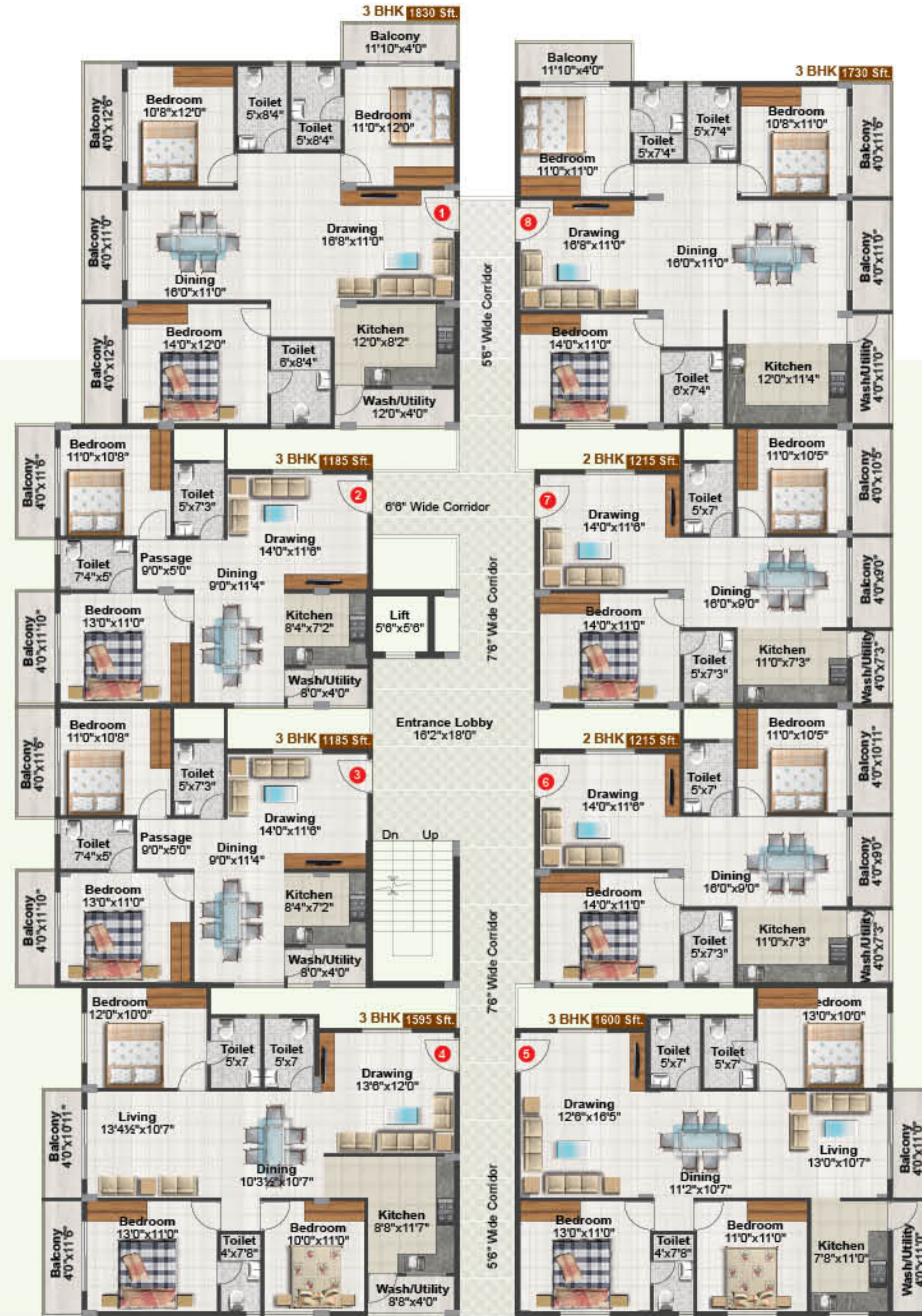
TYPICAL FLOOR PLAN

Area Statement

Flat No.	Unit	Area in Sft.
1	3 BHK	1830
2	2 BHK	1185
3	2 BHK	1185
4	3 BHK	1595
5	3 BHK	1600
6	2 BHK	1215
7	2 BHK	1215
8	2 BHK	1730



BLOCK - C



3 BHK 3D VIEW
 (WEST-FACING)
FLAT No. A1

- Balcony
- Bedroom
- Toilet
- Toilet
- Bedroom
- Drawing
- Balcony
- Kitchen
- Dining
- Balcony
- Utility
- Toilet
- Bedroom
- Balcony



FEEL GOOD.

YOUR HOME IS DESIGNED

TO DELIGHT YOU FOREVER.

- Drawing
- Toilet
- Bedroom
- Balcony
- Kitchen
- Utility
- Dining
- Bedroom
- Balcony



2 BHK 3D VIEW
 (WEST-FACING)
FLAT No. A2

STRUCTURE

RCC framed structure. 6" solid cement blocks for exterior walls & 4" solid cement blocks for internal walls.

PAINTING

Interior Walls - One coat of primer and two coats of emulsion paint with smooth finish and Oil bound distemper for common areas. Exterior Walls - One coat of primer and two coats of cement paints.

DOORS

Main Door - Teak frame with moulded OST shutter.
Internal Doors - Sal wood frames with moulded skin shutters.



WINDOWS

Windows - Aluminum single glazed glass sliding shutters with mosquito mesh fitted and elegantly designed M.S painted grills.

FLOORING

Vitrified tiles flooring, 24"x24", for living, dining & all bedrooms. Ceramic tiles for balconies and kitchen. Anti-skid tiles in toilets of a minimum size of 12"x 12".



KITCHEN

Black granite platform with stainless steel sink 2ft glazed tile dado above granite kitchen platform. Provision for water purifier. Provision for washing machine in utility area.

TOILETS

Colored glazed tiles upto 7ft. height fitting & Accessories - EWC commode and wash basins (white color) of Parryware / Hindware or equivalent make. Hot and Cold Shower Mixer, pillar cock, health faucet in each toilet of standard make like Jaguar / Essess or equivalent brand.

— FEEL GOOD.

— EVERYTHING AROUND

— YOU IS OF TOP STANDARDS.

SPECIFICATIONS



ELECTRICAL

Power supply of 3KVA for 2BHK and for 3 BHK apartment. Concealed conduits with good quality copper wire - Anchor or equivalent. Modular electrical switches-Anchor or equivalent. One Earth Leakage Circuit Breaker (ELCB) for each apartment. One Miniature Circuit Breaker (MCB) for each room. Points for geyser in toilets, Washing Machine in utility, refrigerator in kitchen or dining, Microwave Oven in Kitchen, Air Conditioner in All Bed Rooms, TV & Telephone Point at living and master bedrooms.

FACILITIES

Sewage Treatment Plant. Rainwater harvesting pits.

BACK-UP GENERATOR

Standby generator for light in common area, lifts and pumps 0.5 KVA power backup to each apartment.

LIFTS

6 passenger automatic and make will be Johnson / Hephzi or equivalent.



FEEL GOOD.

SAVOR THE TIME AND MAKE
 MEMORIES OUT OF THEM.

It's not about how much time one has in life, but it's about how beautifully you make use of that time. Come back home to many ways of refreshing yourself. Or if you want to tag along the family, you could do that as well. Purvi Mithila has a host of options for you to make the most of the time on hand. With features ranging from a clubhouse to a swimming pool to a walkway for those morning and evening walks and everything in between, there's enough to rejoice here with and then rejuvenate.

AMENITIES & FEATURES

- Luxury Amenities
- 2/3 BHK Luxury Apartment
- BBMP Approved
- Vaastu compliant flats
- Elegant flooring with vitrified tiles
- French windows
- Club house
- Children's play area
- All round jogging track
- Beautiful landscaping
- Premium bathroom fittings
- Designer wall tiles for kitchen and bathrooms
- Walls with a luxurious finish
- Lifts:-6 passenger capacity lifts of Johnson / Hephzi or equivalent Lifestyle Amenities
- Swimming pool
- Fully equipped gym
- Basement car parking
- Well appointed lobby
- 24 hours security

Yourself
 with a
 new note
 every time



FEEL GOOD.

THE EVENINGS ARE AS

VIBRANT AS THE MORNINGS.

Open your doors and windows to a caressing blanket of fresh and breezy air. Or just abandon yourself on the bench in the ground. Whatever you do, you will be able to create a bank of good times for yourself right here, as Varthur has several options of recreation. From little snack kiosks to small malls to stretches of road you can walk endlessly on. All you will need to do is decide how vibrantly you would want to spend your evenings around your home.

